



The Love of Reading at Lodge Farm

At Lodge Farm, we believe that reading opens the door to education. Our curriculum ensures that all children have a high level of fluency and understanding so that they are able to access all areas of the curriculum and learning as they progress through their education and into adulthood. Our curriculum will inspire children to have a love of literature and to become independent life-long learners.

To ensure that children become fluent readers who are able to enjoy accessing a wider range of literature we ensure that:

- Pupils are taught accurate decoding skills through phonics lessons which have a clear progression as detailed in Monster Phonics.
- All pupils have access to high-quality fully-decodable books (pink-blue) or books with no more than three words with new graphemes (blue-orange) which are detailed on the front of the text. This provides pupils with opportunities to practise their reading skills.
- Pupils are provided with home reading books which can be read by the pupil at 95%+ accuracy to provide opportunities to practise their reading skills.
- Pupils are provided opportunities to practise their reading skills throughout the curriculum.
- Pupils in Ks1 and Ks2 have access to daily guided reading lessons in which fluency and comprehension is taught alongside the love of reading. For those pupils in EYFS, guided reading lessons begin as early as possible and no later than the first summer term.
- Pupils who are not making expected progress in reading are identified early. Additional provision is planned and implemented to ensure that these pupils catch up and keep up.

At Lodge Farm, we develop a love of reading by:

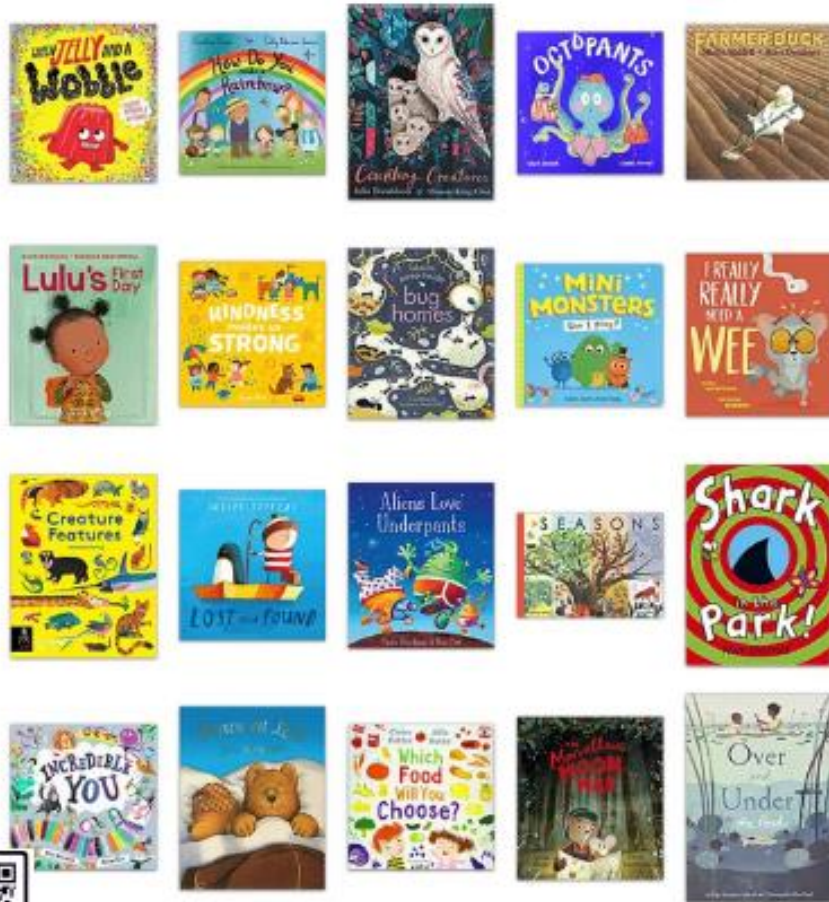
- Reading to our pupils' daily. The class book is a high-quality text chosen from pupils' current year groups' Lodge Farm Reading Spine (see appendix 1). The reading spine ensures that pupils at Lodge Farm have access to a range of high-quality texts whilst also providing progression throughout the school.
- Providing high quality books (from the reading spine and the school library) in the books corners for the pupils to read
- Recommending books to individual pupils, groups of pupils or the whole-class using the Lodge Farm Reading Spine.
- Providing access to high quality books in the school library which all classes have access to throughout the week.
- Providing all pupils who are reading banded books with an additional book from the school library.
- Ensuring pupils who are free-readers are supported by staff members to choose appropriately challenging (95%+ decodable), engaging and high-quality texts as their home reading book from either the library or book corner.
- Providing age-appropriate books which support and develop a love of reading across the curriculum.
- Facilitating high-quality book talk in the classroom through guided reading lessons, the class book, English lessons and at all other available opportunities.
- Planning guided reading lessons using high-quality engaging texts which are age-appropriate to facilitate a love of literature and reading.
- Planning English lessons that are couched in a high quality reading texts which is shared and discussed with the pupils.
- Running Lodge Farm's Reading Bonanza: an exciting opportunity for pupils to read a text of their choice with an adult across the school.
- Celebrating reading days such as world poetry day, World Book Day and Shakespeare week.

Appendix 1: Lodge Farm's Reading Spine

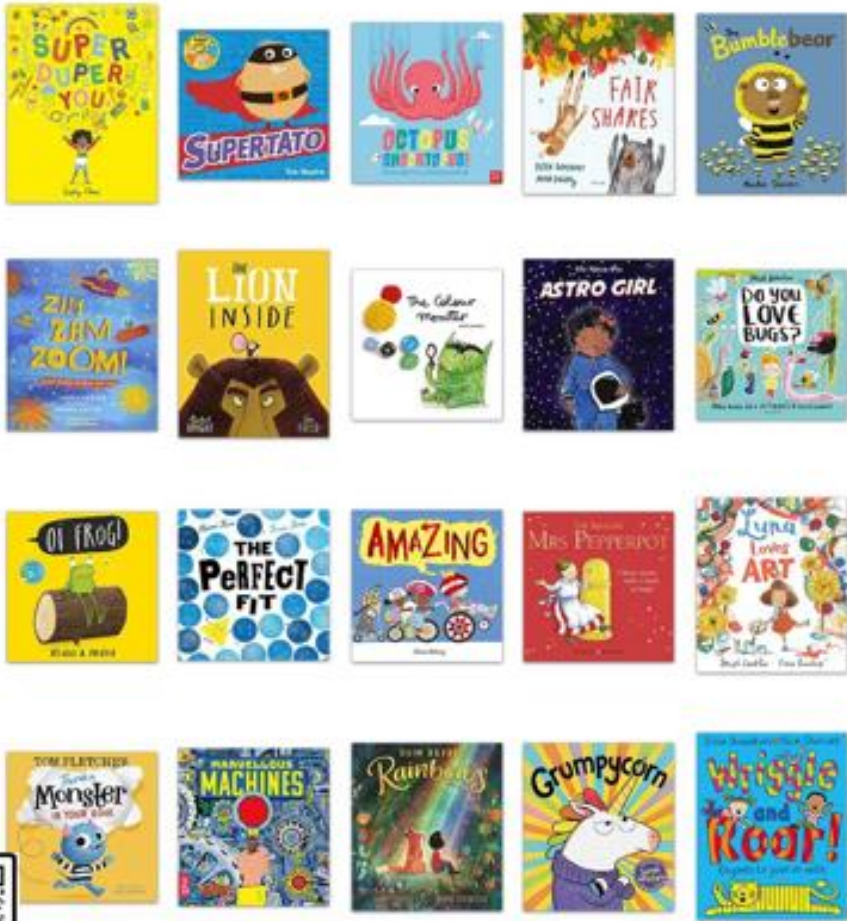
Lodge Farm's reading spine is selection of texts which have been chosen to foster and develop a love of reading. Each classroom contains a selection of books from their year group's spine which are changed regularly across the year group. These books are championed by class teachers through the book corners. Teachers read a chosen book from their year group's reading spine to their pupils daily known as the class book. The class book is chosen by the class teacher based on the pupils' current interests and needs. The reading spine provides progression across the school and ensures that pupils are exposed to a wide-range of engaging authors and text types. Lodge Farm's reading spine features a range of characters which have traditionally been under-represented in children's books to ensure that it is inclusive, diverse and is representative of our community. The progression of the spine ensures that books are not repeated as class books in multiple year groups. Pupils at Lodge Farm are enthusiastic about the spine which is represented by the following quotation from Year three: "I love the Iron Man. I just want to read it all the time."



50 Recommended Reads for Preschool & Nursery (ages 3-4)



50 Recommended Reads for... Reception (ages 4-5)

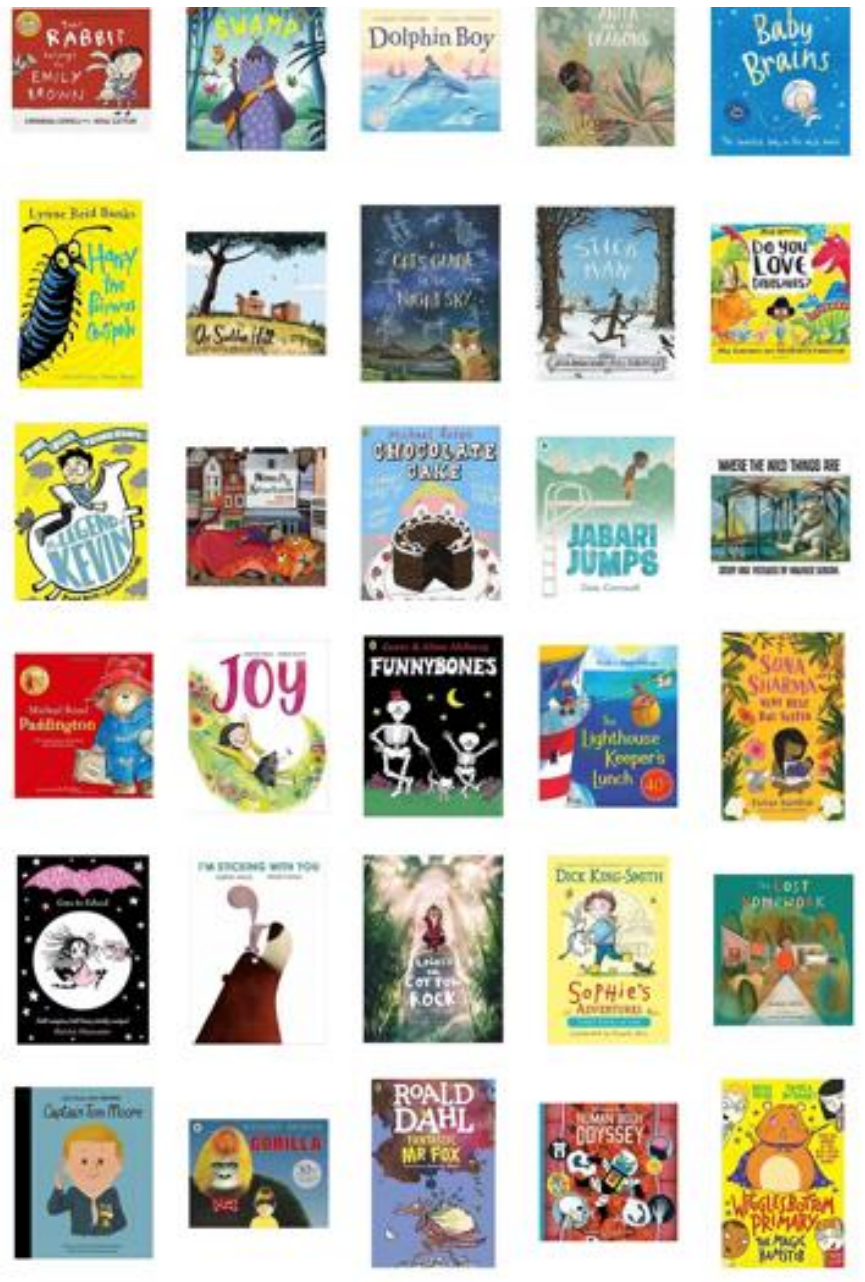




50 Recommended Reads for...

Year 1

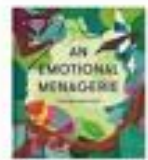
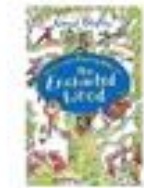
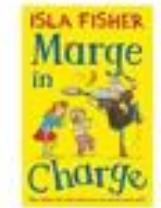
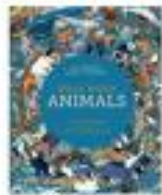
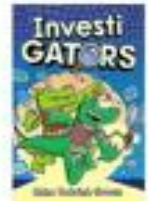
(ages 5-6)





50 Recommended Reads for...

Year 2 (ages 6-7)

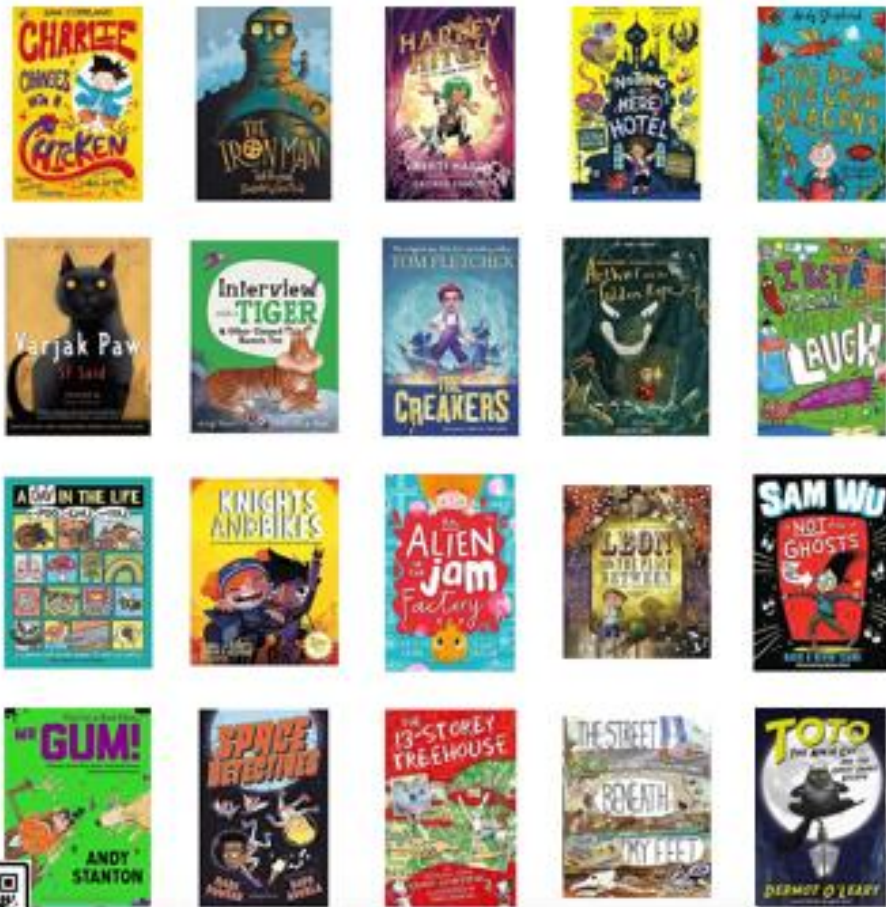




50 Recommended Reads for...

Year 3

(ages 7-8)



50 Recommended Reads for...

Year 5

(ages 9-10)



50 Recommended Reads for...
Year 6
 (ages 10-11)

